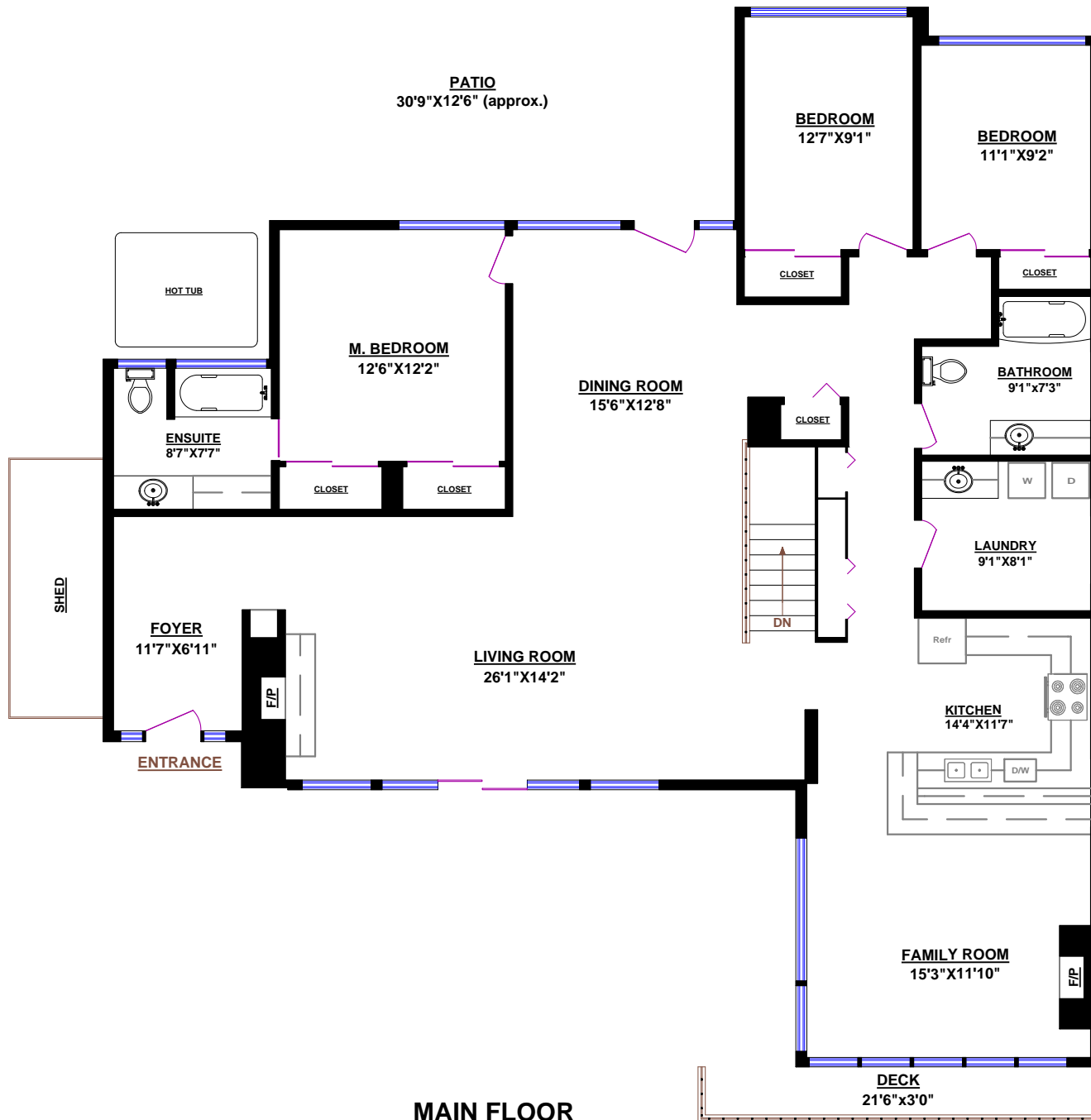


# PHIL GUSTIN

Sutton Group - West Coast Realty

cell: 604.727.5525

website: [www.gustinhomes.com](http://www.gustinhomes.com)



**MAIN FLOOR**

## 4005 SW MARINE DRIVE, VANCOUVER

### TOTALS

Main Floor (finished): 2,023 sq.ft.

Lower Level (finished): 992 sq.ft.

**TOTAL FINISHED: 3,015 sq.ft.**

Lower Level (unfinished): 44 sq.ft.

**GRAND TOTAL: 3,059 sq.ft.**

### OTHER AREAS:

Garage: 395 sq.ft. approx.

Deck: 64 sq.ft.

Patio: 386 sq.ft. approx



© Vancouver Realty Support Group Inc., (604) 761-7919  
[www.realtorsupport.com](http://www.realtorsupport.com)  
[www.floorplansvancouver.com](http://www.floorplansvancouver.com)